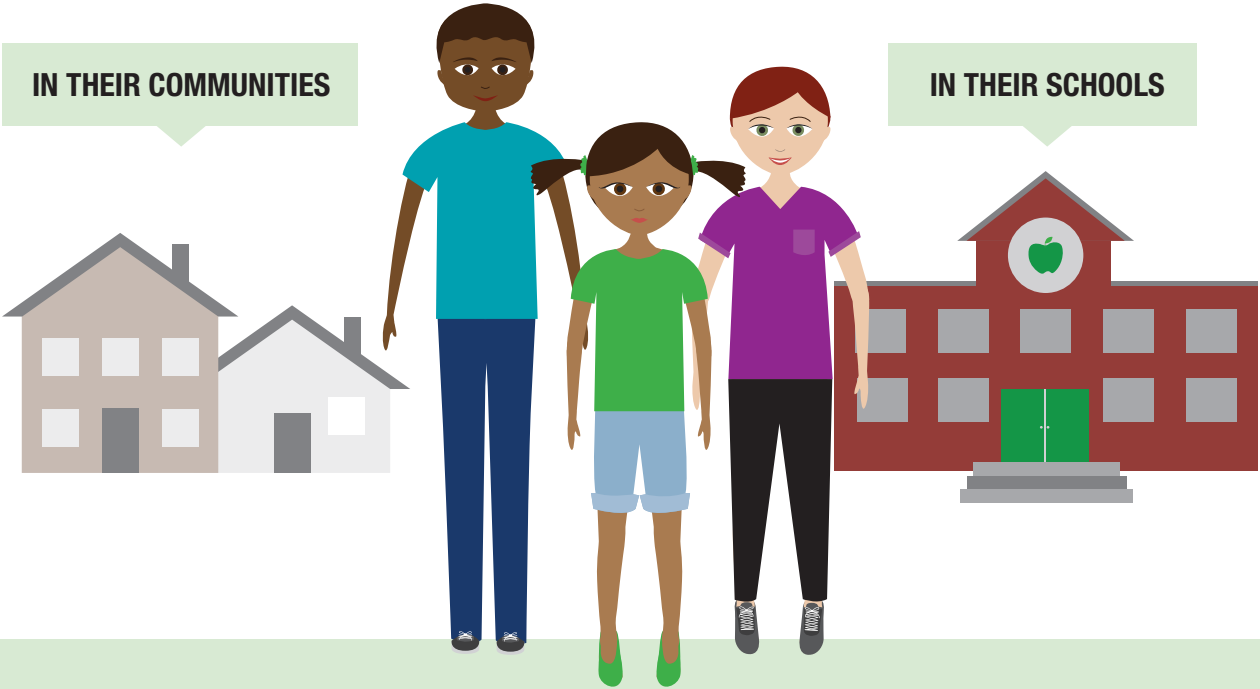


Behavioral and Mental Health Services: Survey Says More is Needed

Nationwide Children's Hospital partnered with The Harris Poll, one of the longest running surveys tracking public opinion in the U.S., to conduct this survey in early 2018.

87% of Americans believe there needs to be more pediatric mental health support, including increased treatment, therapy and prevention resources.

Pediatric mental health experts need to meet kids where they are.



Primary barriers to accessing pediatric mental health services for families:

37%
EXPENSE

33%
INSURANCE COVERAGE

26%
LACK OF NEARBY SERVICES

These barriers highlight the urgent need for prevention efforts for children in their communities and schools.



NATIONWIDE CHILDREN'S
When your child needs a hospital, everything matters.™