

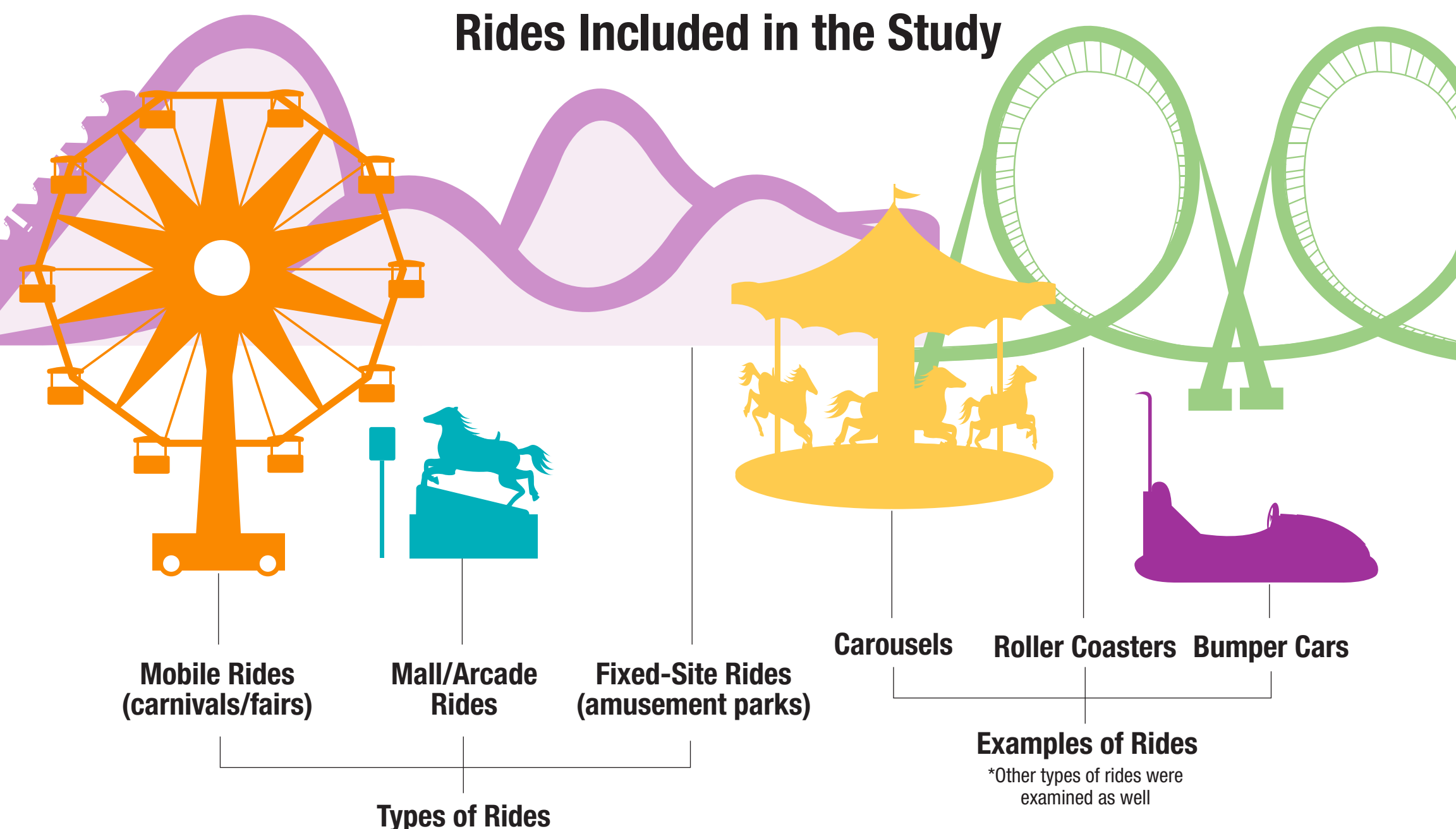
AMUSEMENT RIDE-RELATED INJURIES

Among Children and Adolescents in the U.S.

The Study

Conducted by the Center for Injury Research and Policy of The Research Institute at Nationwide Children's Hospital

Rides Included in the Study

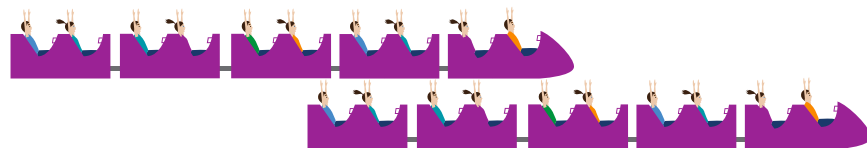


Amusement Ride-Related Injuries

92,885 children

or teens 17 years old and younger were treated in U.S. hospital emergency departments for amusement ride-related injuries between 1990-2010

that's an average of **4,423** injuries per year



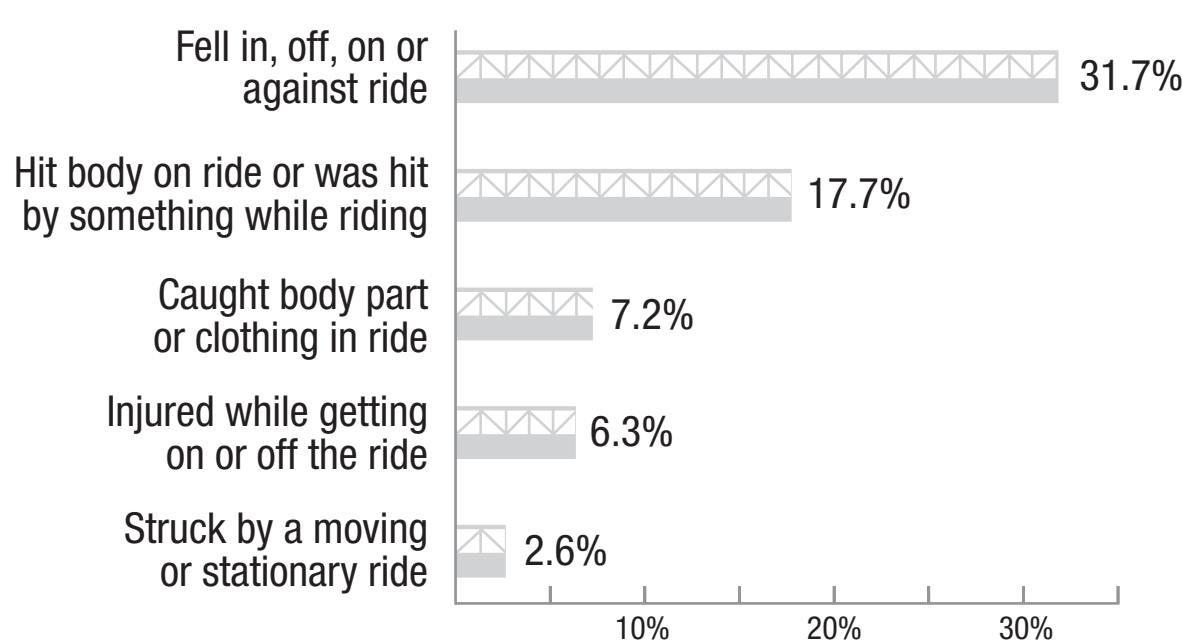
From May to September, an average of **20 children or teens** are treated in U.S. emergency departments **EACH DAY** for amusement ride-related injuries

Most Commonly Injured Body Part:

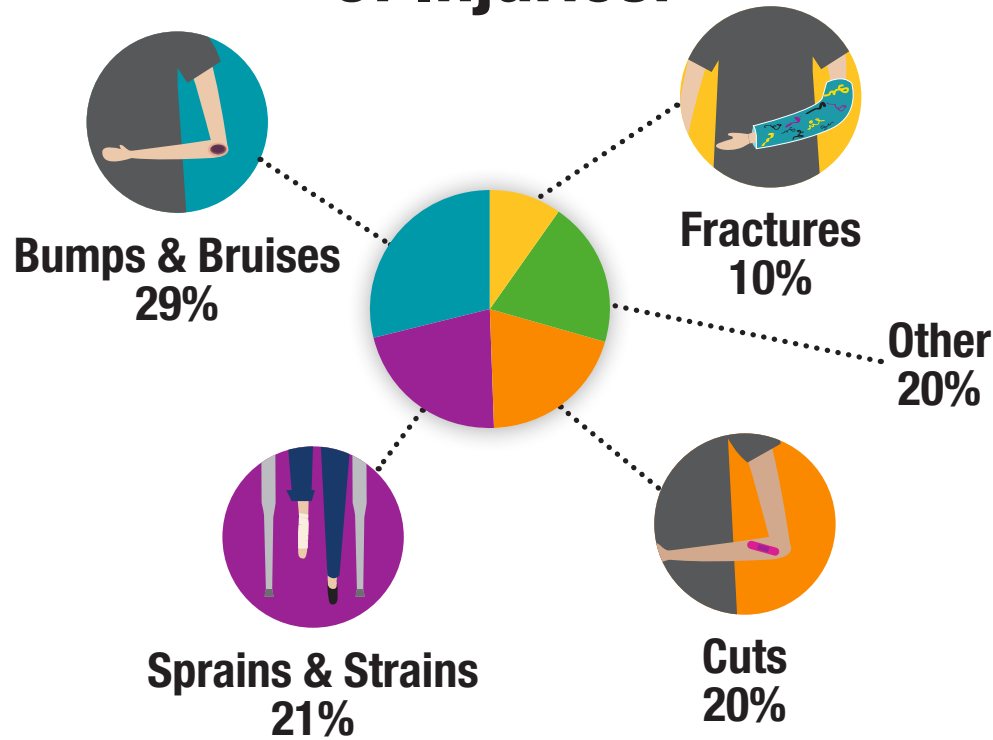
Head & Neck 28%



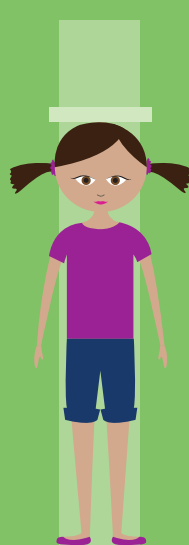
Most Common Causes:



Most Common Types of Injuries:



Safety Precautions



- 1** Follow height, age, weight and health restrictions.
- 2** Follow special seating order/loading instructions.
- 3** Always use safety equipment such as seat belts and safety bars.

- 4** Know your child. If you don't think he/she will be able to follow the rules, keep him/her off the ride.
- 5** Trust your instincts. If you are worried about the safety of the ride, choose a different activity.

For more information, please visit NationwideChildrens.org/injury-research-and-policy

Study by researchers in the Center for Injury Research and Policy at Nationwide Children's Hospital. Data for this study were obtained from the National Electronic Injury Surveillance System (NEISS), which is operated by the U.S. Consumer Product Safety Commission.

Published in the journal *Clinical Pediatrics*.



NATIONWIDE CHILDREN'S
When your child needs a hospital, everything matters.™